

The Hague Pathway College

Agent training
20.02.2024



Who is here with you today



Maria Nikolaidou

Director of Marketing and Admissions

maria.nikolaidou@navitas.com



Saulena Matuzaite

Student Recruitment Coordinator

saulena.matuzaite@navitas.com
general@thehaguepathway.nl



Louise Prasser

Marketing Manager

louise.prasser@navitas.com

Programme for today

- Studying in The Netherlands
- The Hague University of Applied Sciences
- The Hague Pathway College
- THPC student experience
- Practical matters
- Quiz (winner will receive a prize!)
- Q&A



College of diversity

Thank you for helping us grow!

**200 STUDENTS FROM OVER 50
COUNTRIES!**

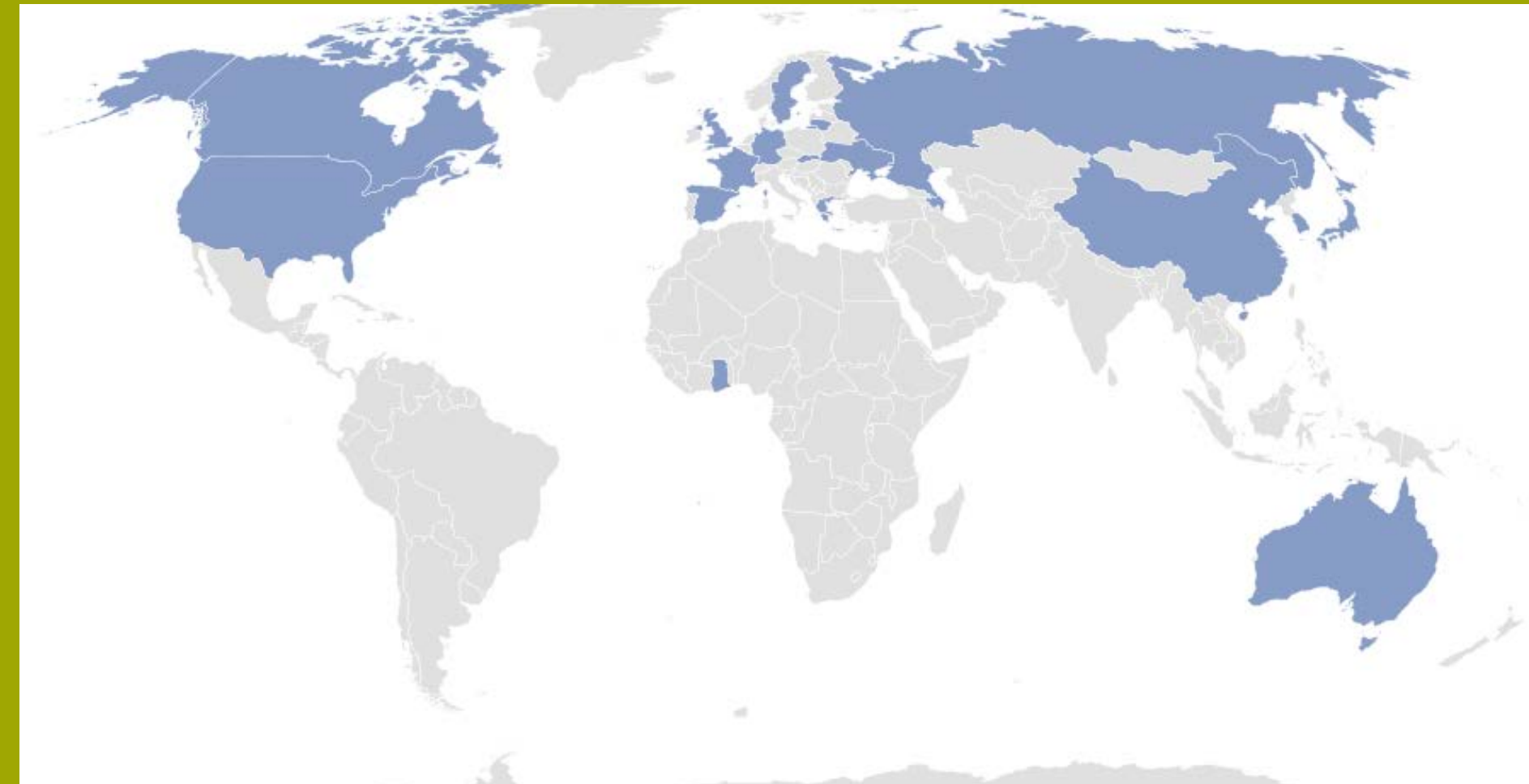
September 2023 & January 2024

Truly international team

THPC team comes from 12 different countries

Most of us have studied and/or worked abroad

4 of us have been international students in The Netherlands!





Studying in The Netherlands

5 reasons to study in The Netherlands



Safe country



**Open minded,
international
and innovative
culture**



**Cities are easy
to navigate
with great
infrastructures**



**High-quality,
affordable and
globally
recognized
education**



**18th largest
economy in the
world**

The Netherlands - Hub for multinational companies



Dutch labor market overview



Unemployment rate in The Netherlands is 3.7%

Global unemployment rate is 5.6%



High starting and average salaries

- Average salary in The Netherlands is € 2,855 per month
- Starting salary of university graduates: € 2,200 - 3,000 per month

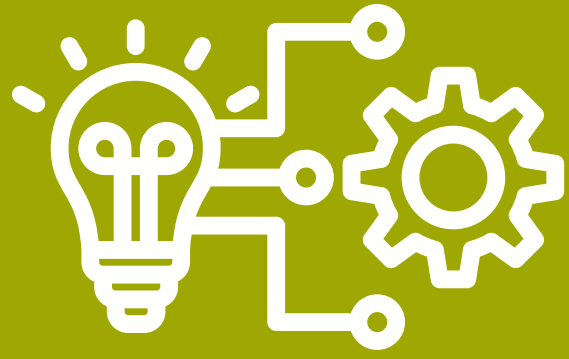
Depends on degree! F.e. Chemical engineering graduates receive € 3,000



Employee benefits

- Minimum 25 days of annual leave & flexible leave days
- Child support / parental leave
- Health insurance
- Pension
- 13th salary (vakantiegeld)

Sectors with high demand for skilled labor in The Netherlands



Engineering



FinTech



Information &
Communications Technology



Healthcare

THUAS bachelor degrees with high demand for skilled labor



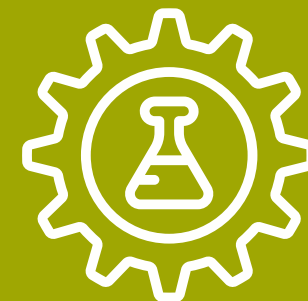
BA International Communication Management



BSc Industrial Design Engineering



BSc User Experience Design



BSc Chemical Engineering
(Process & Food Technology)



Get to know The Hague

Cosmopolitan vibe

City of diversity: over half a million inhabitants from 180 nationalities

Hub of international companies

131 international, 80 justice organizations, 100 biomedical companies and a growing creative sector

Historical importance for EU

Seat of Dutch government, home of royal family, City of Peace and Justice



Get to know The Hague

Well-connected

30min away from Amsterdam airport, train connections with France, Germany, Belgium, UK

Plenty of activities

11km of coastline, many forests, parks & cycle routes, theatres and museums





The Hague University of Applied Sciences

Differences between Research & Applied Sciences universities

University of Applied Sciences

- Solve real-world problems
- Develop technologies, create products or business plans
- Hands-on, practical education
- Preparing students for specific careers
(Mandatory internships)
- Focus on soft skills and networking



Research university

- Traditional learning
- Emphasis on theoretical and academic study
- Independent study, multidisciplinary projects
- Strong focus on “why” instead of “how”



The Hague University of Applied Sciences

Preparing the student for the job market

International hands-on education

- Student-led learning
- Analytical debate
- Interactive workshops

Mandatory internship(s) during the bachelor's programmes

One or more mandatory internships in The Netherlands or abroad

Quick access to Dutch and International job market

400 partner institutions globally for study abroad and/or internships



The Hague Pathway College

The Hague Pathway College



International Foundation Programme

- Full year (September intake)
- Fast-track (January intake)

Progression to 3-year bachelor's degrees at THUAS

Management & Social Sciences stream

- BBA International Business
- BA International Communication Management
- BA International Sport Management
- BA European Studies
- BSc International Financial Management & Control
- BSc User Experience Design

Technology & Design stream

- BSc Industrial Design Engineering
- BSc Chemical Engineering (Process & Food Technology)

THE HAGUE PATHWAY COLLEGE



Practical education



The Hague



**Personalized student
support**



Curriculum headlines

All subjects must be passed with a minimum of 55% to progress

- Tailor-made curriculum reflecting the demands of THUAS
- Students develop hard skills but also soft skills
- Projects on different topics
- Total workload of 40 hours per week

STUDENT SUPPORT



Mandatory one-to-one meetings

To discuss assignments and students' academic performance and progress



Social networking activities

Opening & End of year ceremonies, Student Engagement Weeks (1 each term), sport activities



Office hours every day

Either drop-in or planned meetings



Extra classes (if applicable)

Available for Math, Physics and Chemistry

Curriculum for International Foundation Programme

September intake (September - June/July)		
	January intake (January - June/July)	
Term 1	Term 2	Term 3
Academic Literacy & Skills	Academic Literacy & Skills	Academic Literacy & Skills
Math for Engineering Math for Business	Math for Engineering Math for Business	Math for Engineering Math for Business
ALS project	ALS project	ALS project
Study Sucess	Study Sucess	Study Sucess
Communication (Business stream)	Management & Organization (Business stream)	Global Citizenship & Sustainability (Business stream)
	Physics (Engineering stream)	Physics (Engineering stream)
	Chemistry (Chemical Engineering)	Chemistry (Chemical Engineering)
	Dutch (elective)	Dutch (elective)



THPC student experience

How does THPC help students?

Strengthen our abilities and knowledge

Meeting many new people and social networking through student engagement weeks

Making a final decision for our bachelor's studies

Getting used to the Dutch educational system

Reminded us of old concepts

What advice do THPC alumni give to future students?



Stay on top of all documents and required actions

-Alyssa (USA)



Create good balance between academics and social life. Organize your time wisely to study but also find time to socialize. Keep yourself busy especially during cold winter months!

-Leticia (Colombia/Germany)



Explore The Netherlands and other countries in Europe as it's so easy to do that!

-Mary (Russia)



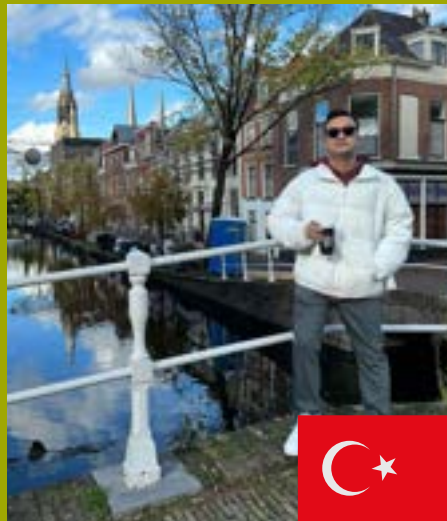
Look for internships, co-op programs, and job fairs to gain practical experience and explore career options

-Shayan (Iran)

TAP - The Ambassador Platform



Alyssa



Çan



Yelyzaveta



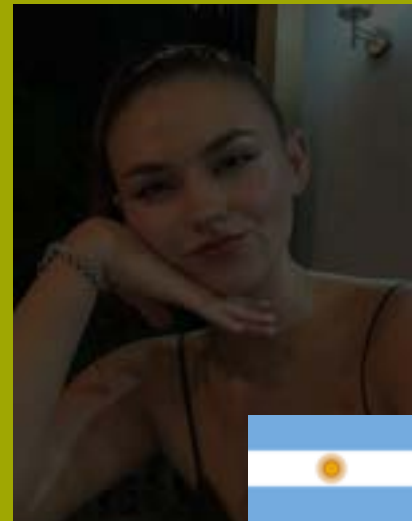
Paula



Nakai



Sultan



Paloma



Leticia



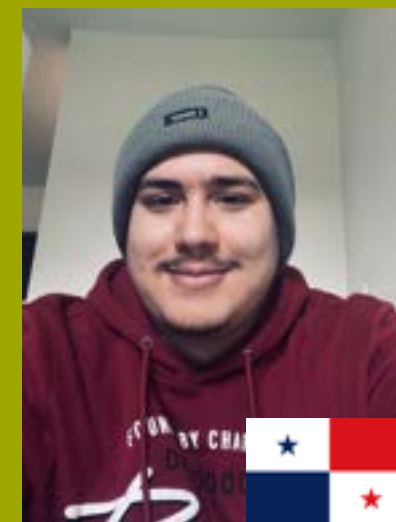
Mary



Judy



Sloane



Julen



Shayan



Ana Luisa

THPC alumni testimonials

Sultan

Kazakhstan



3rd year student
International Financial Management & Control

Junior Audit Assistant Intern at The Audit
Company

Assurance Intern at PwC

Published author: "The Outcast Presidents"



Eduardo

Panama



THPC & THUAS graduate (BA European Studies)

Research intern at the Embassy of the Republic of
Panama in The Netherlands

Currently employed by the
Embassy of the Republic of Panama!





Practical matters

Entry requirements

Academic entry requirements (can be based on forecasted results)

- Secondary school diplomas from most countries
- Minimum average and grade requirements apply, as well as required subjects
- More information on our [website](#)!

English language requirements

Programme	Overall score	Sub-scores	Alternative tests
International Foundation Year (September)	IELTS 5.0	IELTS 5.0 in writing, no scores below 4.5	TOEFL, Cambridge English, TOEIC
International Foundation Fast-track (January)	IELTS 5.5	IELTS 5.5 in writing, no scores below 5.0	TOEFL, Cambridge English, TOEIC

Tuition Fees - THPC *

Programme	EU and non-EU passport holders
International Foundation Year (September)	€ 13,930 per year
International Foundation Fast-track (January)	€ 10,950 per year

Tuition Fees - THUAS (progression degrees) *

Programme	EU passport holders	Non-EU passport holders
Bachelor's degree	€ 2,530 per year	€ 9,889 per year

*Amounts above may be subject to annual change

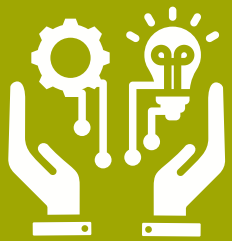
Scholarships



For September 2024 intake, we're offering 15 scholarships of 1000-1500 EUR!



Excellence scholarship



Technology & Design incentive



Women in Leadership scholarship

Applications are now open on our [website](#), and we eagerly await your students' submissions!



Student visa

- **The opportunity to travel around Europe**
- **Work up to 16 hours per week or 3 months fulltime during summer break**

- **1-year post-study work visa**

Allows students to look for jobs or set up their business in The Netherlands

- **Qualify for permanent residency after 5 years of uninterrupted stay after study**



Accommodation

THPC offers support with finding the right accommodation.

Rooms available at The Social Hub, on a first-come, first-served basis.

! Students are responsible for timely booking!

! Securing a permanent address is mandatory for immigration purposes!

*Please reach out to general@thehaguepathway.nl for accommodation advice



Important dates

Application deadline: 14th of July

Visa & payment deadline: 1st of August

Visa & accommodation webinar: in May

Pre-departure webinar: in August

Induction week: 16th of September

How to get in touch



Email

general@thehaguepathway.nl



Phone

+31 (0)70 305 2456



Address

Johanna Westerdijkplein 75
2521 EN, The Hague



The Ambassador Platform

Chat with our student
ambassadors!



Follow us on social media!



@thehaguepathwaycollege



@thehaguepathwaycollege4557



The Hague Pathway College



The Hague Pathway College